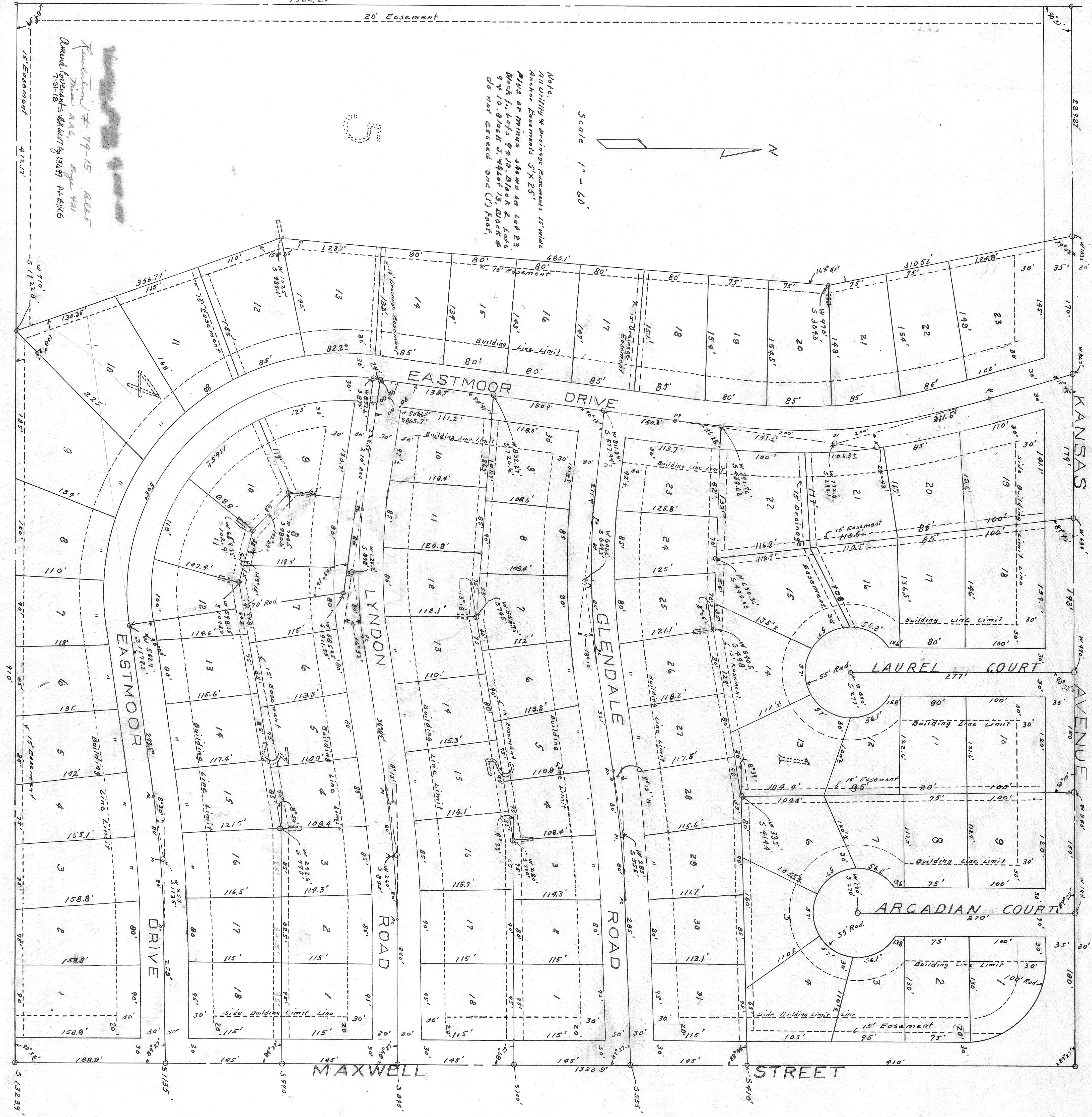


EASTMOOR ADDITION MCPHERSON KANSAS



KNOW ALL MEN BY THESE PRESENTS, That Duguid Investment Co. Inc. proprietor and owner of Northeast Quarter of Southeast Quarter of Section Twenty Eight (28), Township Nineteen (19) South, Range Three (3) West, in McPherson County, Kansas has caused said land to be surveyed and plotted under the name of Eastmoor Addition to the City of McPherson, Kansas and has caused same to be subdivided into blocks, lots, streets, courts and easements as shown on the accompanying plat. All streets, courts and public ways are hereby dedicated to and for the use of the public and easements are reserved for construction and maintenance of public utilities.

IN WITNESS WHEREOF, the president and secretary of Duguid Investment Co. Inc. have presented this declaration on this 14th day of April 1952

Attest: Clayton S. McPherson Secretary President

State of Kansas, County of McPherson, SS
BE IT REMEMBERED, that on this 14th day of April 1952 W. S. Duguid President and Clayton S. McPherson Secretary of Duguid Investment Co. Inc. to me known to be the persons who executed the above and foregoing instrument and duly acknowledged the execution of the same.

IN WITNESS WHEREOF, I have hereunto set my official signature and affixed my national seal the day and month above written.

Clayton S. McPherson Notary Public.
 My Commission expires MAY 6-1953

DESCRIPTION
 The Northeast Quarter of Southeast Quarter of Section Twenty Eight (28), Township Nineteen (19) South, Range Three (3) West in McPherson County, Kansas except the north 7 1/2 by Five (5) Feet deeded to Kansas State Highway Commission and now a part of U.S. Highway 502, and described as follows: Beginning 35 South on the NE Cor. of Sec. 28, T. 19S, R. 3W, 6th PM, thence south on east line of said Sec. 28, a distance of 1288.9 feet, thence west 1322.17 feet thence north 1821.55 feet to a point 35 feet south of the north line of said SE 1/4 of said Sec. 28, thence east 1321.87 to the place of beginning.

I, C. Johnson, hereby certify that in March, 1932, I surveyed the above described property and determined the location of monuments in Eastmoor Addition, and the distances shown on plat are measurements south of the north line and west of the east line of said SE 1/4 of said Sec. 28.

I also certify that above description is correct and accompanying plat is true exhibit of said survey. I also certify that I was during the time of this survey, licensed by the State of Kansas to practice the profession of Civil Engineer.

C. Johnson

State of Kansas, County of McPherson, SS
BE IT KNOWN, That the accompanying Plat has been submitted to me, and that the same is hereby approved this 14th day of April 1952

Clayton S. McPherson City Attorney

State of Kansas, County of McPherson, SS
 The accompanying plat has been to the Planning Commission of the City of McPherson, Kansas, and it is hereby approved on this the 14th day of April 1952

Clayton S. McPherson Chairman, Planning Commission.

State of Kansas, County of McPherson, SS
 I, Olive Oakley, City Clerk of the City of McPherson, Kansas, hereby certify that the accompanying plat was approved by the Planning Commission, and was by the Planning Commission submitted to the Board of City Commissioners of said City on the 14th day of April 1952 and was by said Board of City Commissioners approved and affixed **IN WITNESS WHEREOF** I have hereunto set my official signature and affixed the Seal of said City this 14th day of April 1952.

Olive Oakley City Clerk